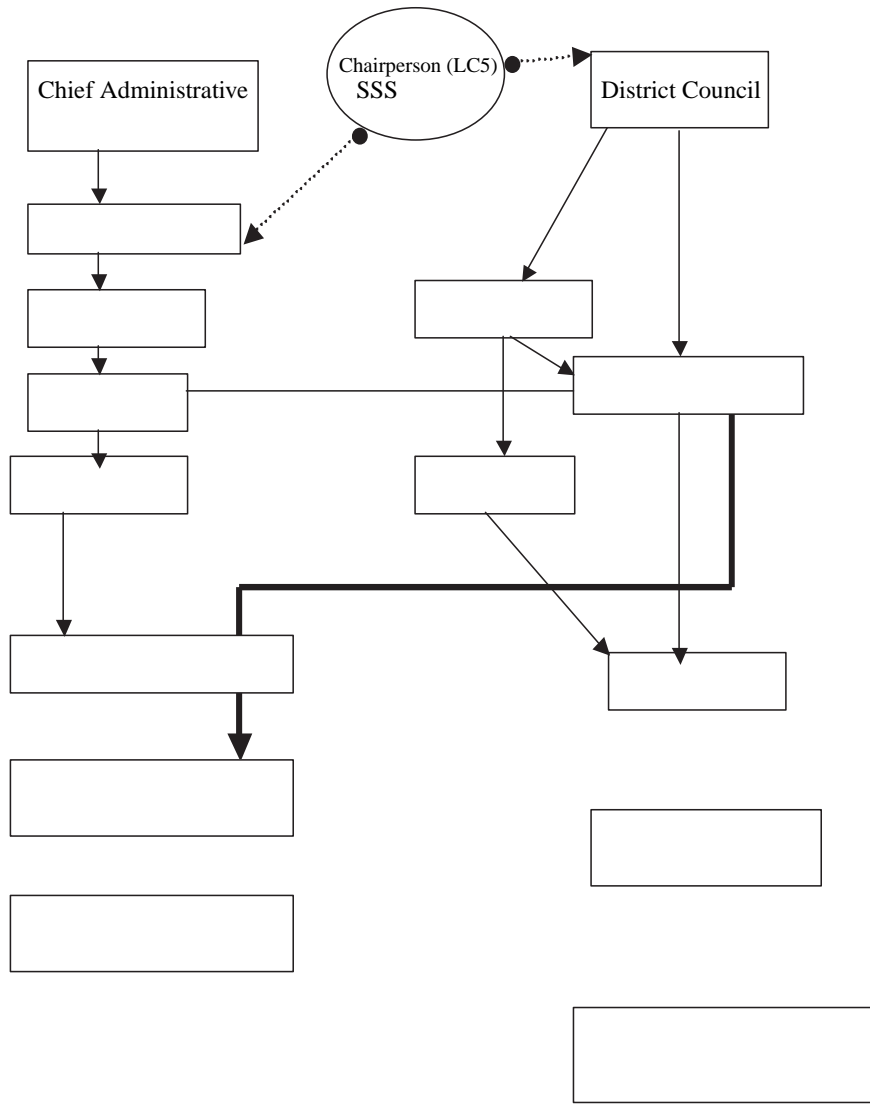



a
a (K a a a a a) l. 2000). a a

HEALTH MANAGEMENT

ADMINISTRATIVE / POLITICAL



· a ' a
:

CDH a 

Results

Responses from 647 CDHWs

M [608 (94%) CDH a
(74.3%) a a a 1 , a 2002; 481
559 (86.4%) a a a 299 (46.1%) a .
I 544 (84.1%) CDH .
a a a 1 , 602 (93.1%)
; 642 (99.2%)
447 (69.1%) a a a
2 a a a , 402 (62.1%)
a a a 1 , 475 (73.4%)
; 642 (99.1%) a a
a a a a , 429 (67.5%)
a a a a a ; a -
a ; HI /AID ; a a a ;
429 CDH a (F a 2).
a , 256 (59.7%) a a

CDH a a a . A a 380 (88.6%)
a a a a 407 (95%) a a
CDH a a a a a
a a a a a

a
 a 58.6% (638/1089) ; 55.8% (608/1089)
 CDH_a ; 55.8% (608/1089)
 a ; 68.6% (746/1088)
 ; 93.6% (942/1006)
 ;
 99.3% (1080/1088)
 . A 41.5% (452/1089)
 a CDH a a CD I
 a , <1% (11/1090)
 (1).

a a a
 a a a CDH a a
 CDH (2). a a a
 CDH a a
 a a
 a a a
 a G a
 a a
 CD I a
 (P < 0.001);
 2002 (P < 0.05);
 90% (P < 0.05);
 (P_a < 0.001);
 (0.01 < P < 0.05).

Involvement of CDHWs in other health or development activities

- [67.5% (429/636) CDH_a . A
 a a a
 0.5 (P < 0.05);
 a a 2 (P < 0.001);
 (P < 0.05); CDH
 (P < 0.05). a CDH
 a a , a
 a ,

Table 2 C^a CDH^a
 [= 256 (59.8%)^a

N ' [= 172 (40.2%)^a 2002

F ^a	C ^a			CD I ^a			P- ^a
	(%)	N	(%)	(%)	N	(%)	
1.	229 (93.1)	17 (6.9)	246	131 (76.2)	41 (23.8)	172	<0.001
2.	149 (65.6)	78 (34.4)	227	88 (64.7)	48 (35.3)	136	N
3. D	249 (97.3)	7 (2.7)	256	160 (93)	12 (7)	172	<0.05
4. D	141 (55.1)	115 (44.9)	256	77 (44.8)	95 (55.2)	172	<0.05
5. D	133 (53.4)	116 (46.6)	249	117 (73.1)	43 (26.9)	160	<0.001
6.	176 (70.7)	73 (29.3)	249	133 (83.1)	27 (16.9)	160	0.01 < P < 0.05
7. D	160 (62.5)	96 (37.5)	256	119 (69.2)	53 (30.8)	172	N

CD I^a ; 75.9%
 CDH^a ; 58.7%
 CDH^a ; 77.6%
 CDH^a ; 90%
 CDH^a ; 99.3%
 CDH^a ; 90.9%
 CDH^a ; 70% (55/79)
 CDH^a ; HI /AID
 CDH^a ; 2.8% (24/868). I
 CD I^a 54% (864) CDH^a
 (F^a 2;

Table 3 C^a CD I^a 864 CDH^a 2002

F ^a	C ^a			CD I ^a			P- ^a
	(%)	N	(%)	(%)	N	(%)	
1.	297 (63.9)	168 (36.1)	465	298 (75)	99 (25)	397	<0.001
2. D	405 (89.9)	61 (13.1)	466	366 (92.2)	31 (7.8)	397	N
3. H ^a	301 (64.5)	166 (35.5)	467	165 (41.6)	232 (58.4)	397	<0.001
4. D							

CD I^a
 (P < 0.001)
 (P < 0.05).
 CD I^a
 12.3%.
 CD I^a
 2 (P < 0.001),
 (P < 0.05).
 91%
 CD I^a

CDH
 CDH_a
 90%
 G_a
 M
 90%
 G_a
 CDH_a
 /
 . F
 /
 (H_a 1997; K &
 1998).
 (K

Discussion

A
 90%
 G
 CD I^a
 NICEF/ ND / B^a /
 (I. 2004).
 CD I^a
 CDH_a
 2
 CDH_a
 CDH_a
 <2% (K & 2001),
 CDH_a
 CDH_a
 CDH_a

Role played by the local government-employed health workers

CDH_a
 . I

a a .I a a
a a 'a a ' a
a a a a .A -
a - a a a a a a a
a a a a () a
a .C a a a
a 'a a
.

a a a , . A ,
a a a a , a a ,
a a a a a , a , a a

